



DVA Product Catalogue



Electric Beds



2001 Alrick Standard Electric Bed

- Electric Hi / Low Function
- Electric Back Elevation
- Electric Knee Break
- Standard Beige Removable Head and Foot Boards
- Four Locking Castors
- Product available for Hire only
- Prior Approval required

Overall Width:	995mm
Overall Length:	2165mm
Bed Height:	270-720mm
Mattress Length:	1980mm
Mattress Width:	880mm
Max User Weight:	200kg

RAP Schedule No.: AB01
 Prescriber: Ch, LMO, Ost, OT, Physio, RN, S



5500 Alrick Pull Apart Electric Bed

- Electric Hi / Low Function
- Electric Back Elevation
- Electric Knee Break
- Electric Trendelenberg
- 4 Lockable Castors
- Bed comes apart into 4 Sections
- Transport Bar included
- Product available for Hire only
- Prior Approval required

Overall Width:	900mm
Overall Length:	2190mm
Bed Height:	295-745mm
Mattress Length:	1980mm
Mattress Width:	880mm
Max User Weight:	200kg

RAP Schedule No.: AB01
 Prescriber: Ch, LMO, Ost, OT, Physio, RN, S



7001 Alrick Ultra Low Electric Bed

- Electric Hi / Low Function
- Electric Back Elevation
- Electric Knee Break
- Vascular Support
- Standard Beige Removable Head and Foot Boards
- 100mm Locking Castors
- Product available for Hire only
- Prior Approval required

Overall Width:	894mm
Overall Length:	2155mm
Bed Height:	195-680mm
Mattress Length:	1980mm
Mattress Width:	880mm
Max User Weight:	170kg

RAP Schedule No.: AB01
 Prescriber: Ch, LMO, Ost, OT, Physio, RN, S

Electric Beds Cont.



2001W Alrick Wide Electric Bed

- | | | | | | | | | | | | | | |
|--|--|----------------|--------|-----------------|--------|-------------|-----------|------------------|--------|-----------------|--------|------------------|-------|
| <ul style="list-style-type: none"> • 1070mm Wide Series • Electric Hi /Low Function • Electric Back Elevation • Electric Knee Break • Vascular Support • Standard Beige Removable Head and Foot Boards • 4 Lockable Castors • Product available for Hire only • Prior Approval required | <table border="0"> <tr> <td>Overall Width:</td> <td>1070mm</td> </tr> <tr> <td>Overall Length:</td> <td>2180mm</td> </tr> <tr> <td>Bed Height:</td> <td>370-700mm</td> </tr> <tr> <td>Mattress Length:</td> <td>2010mm</td> </tr> <tr> <td>Mattress Width:</td> <td>1050mm</td> </tr> <tr> <td>Max User Weight:</td> <td>220kg</td> </tr> </table> | Overall Width: | 1070mm | Overall Length: | 2180mm | Bed Height: | 370-700mm | Mattress Length: | 2010mm | Mattress Width: | 1050mm | Max User Weight: | 220kg |
| Overall Width: | 1070mm | | | | | | | | | | | | |
| Overall Length: | 2180mm | | | | | | | | | | | | |
| Bed Height: | 370-700mm | | | | | | | | | | | | |
| Mattress Length: | 2010mm | | | | | | | | | | | | |
| Mattress Width: | 1050mm | | | | | | | | | | | | |
| Max User Weight: | 220kg | | | | | | | | | | | | |

RAP Schedule No.: AB01
 Prescriber: Ch, LMO, Ost, OT, Physio, RN, S



5500W Alrick Wide Pull Apart Electric Bed

- | | | | | | | | | | | | | | |
|---|--|----------------|--------|-----------------|--------|-------------|-----------|------------------|--------|-----------------|--------|------------------|-------|
| <ul style="list-style-type: none"> • 1070mm Wide Series • Electric Hi / Low Function • Electric Back Elevation • Electric Knee Break • Electric Trendelenburg • Electric Reverse Trendelenburg • Bed comes apart into 4 Sections • 4 Lockable Castors • Product available for Hire only • Prior Approval required | <table border="0"> <tr> <td>Overall Width:</td> <td>1070mm</td> </tr> <tr> <td>Overall Length:</td> <td>2190mm</td> </tr> <tr> <td>Bed Height:</td> <td>295-745mm</td> </tr> <tr> <td>Mattress Length:</td> <td>2000mm</td> </tr> <tr> <td>Mattress Width:</td> <td>1050mm</td> </tr> <tr> <td>Max User Weight:</td> <td>200kg</td> </tr> </table> | Overall Width: | 1070mm | Overall Length: | 2190mm | Bed Height: | 295-745mm | Mattress Length: | 2000mm | Mattress Width: | 1050mm | Max User Weight: | 200kg |
| Overall Width: | 1070mm | | | | | | | | | | | | |
| Overall Length: | 2190mm | | | | | | | | | | | | |
| Bed Height: | 295-745mm | | | | | | | | | | | | |
| Mattress Length: | 2000mm | | | | | | | | | | | | |
| Mattress Width: | 1050mm | | | | | | | | | | | | |
| Max User Weight: | 200kg | | | | | | | | | | | | |

RAP Schedule No.: AB01
 Prescriber: Ch, LMO, Ost, OT, Physio, RN, S



ETUDE4 Etude Basic 4 Electric Bed

- | | | | | | | | | | | | | | |
|--|---|----------------|-------|-----------------|--------|-------------|----------|------------------|--------|-----------------|-------|------------------|-------|
| <ul style="list-style-type: none"> • Electric Hi / Low Function • Electric Back Elevation • Electric Knee Break • Electric Trendelenburg Function • Electric Reverse Trendelenburg • Toe Braking Individual Locking Castors • Bed comes apart into 4 pieces • Product available for Hire only • Prior Approval required | <table border="0"> <tr> <td>Overall Width:</td> <td>920mm</td> </tr> <tr> <td>Overall Length:</td> <td>2200mm</td> </tr> <tr> <td>Bed Height:</td> <td>40-800mm</td> </tr> <tr> <td>Mattress Length:</td> <td>1980mm</td> </tr> <tr> <td>Mattress Width:</td> <td>880mm</td> </tr> <tr> <td>Max User Weight:</td> <td>180kg</td> </tr> </table> | Overall Width: | 920mm | Overall Length: | 2200mm | Bed Height: | 40-800mm | Mattress Length: | 1980mm | Mattress Width: | 880mm | Max User Weight: | 180kg |
| Overall Width: | 920mm | | | | | | | | | | | | |
| Overall Length: | 2200mm | | | | | | | | | | | | |
| Bed Height: | 40-800mm | | | | | | | | | | | | |
| Mattress Length: | 1980mm | | | | | | | | | | | | |
| Mattress Width: | 880mm | | | | | | | | | | | | |
| Max User Weight: | 180kg | | | | | | | | | | | | |

RAP Schedule No.: AB01
 Prescriber: Ch, LMO, Ost, OT, Physio, RN, S

Electric Beds Cont.



PROSAIC Eurocare Prosaic Electric Bed

- | | | |
|---|------------------|-----------|
| • Electric Hi / Low Function | Overall Width: | 1120mm |
| • Electric Back Elevation | Overall Length: | 2120mm |
| • Electric Knee Break | Bed Height: | 400-800mm |
| • Electric Trendelenburg | Mattress Length: | 1980mm |
| • Electric Reverse Trendelenburg | Mattress Width: | 880mm |
| • Full length Timber Side Rails and Self Help Pole standard | Max User Weight: | 160kg |
| • Product available for Hire only | | |
| • Prior Approval required | | |

RAP Schedule No.: AB01

Prescriber: Ch, LMO, Ost, OT, Physio, RN, S

Bed Accessories



BDDR Drop Down Rails to Suit Electric Beds

- Drop Down Rails to increase patient safety
- Assists in patient positioning and transfers
- Easily fitted and removed
- Fits most Beds
- Product available for Purchase only

Overall Height: 400mm above sleeping surface

RAP Schedule No.: AB01
 Prescriber: Ch, LMO, Ost, OT, Physio, RN, S



BLP Bed Lifting Pole to suit Electric Beds

- Large Clamp on Rail to increase patient safety
- Assists in patient positioning and transfers
- Easily fitted and removed
- Fits most Beds
- Product available for Purchase only

Weight Limit: 100kg

RAP Schedule No.: AB01
 Prescriber: Ch, LMO, Ost, OT, Physio, RN, S



RAILSLARGE Large Clamp On Rails to suit Electric Beds

- Drop Down Rails to increase patient safety
- Assists in patient positioning and transfers
- Easily fitted and removed
- Fits most Beds
- Product available for Purchase only

Overall Height: 400mm
 Overall Width: 200mm

RAP Schedule No.: AB01
 Prescriber: Ch, LMO, Ost, OT, Physio, RN, S



RAILSPADDED Padded Rails to suit Electric Beds

- Padded Sides for Rails to increase patient safety
- 2 Way Stretch Vapour Permeable Material
- Easily fitted and removed
- Foam filled for extra protection
- Product available for Purchase only

Overall Height: 0mm
 Overall Width: 0mm

RAP Schedule No.: AB01
 Prescriber: Ch, LMO, Ost, OT, Physio, RN, S

Foam Mattress Selection

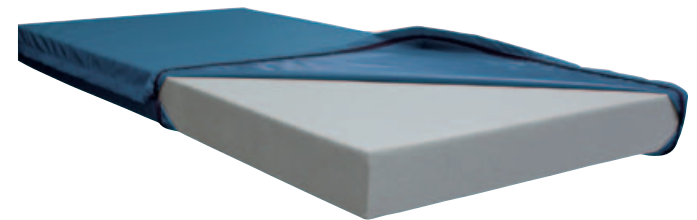


H201 Thin 2" Foam Mattress

- For use solely as an Underlay Mattress for Alternating Overlay Systems
- Load limit as per overlay working limit
- Product available for Purchase only

Overall Width:	880mm
Overall Height:	50mm
Overall Length:	1980mm

RAP Schedule No.: AB14
 Prescriber: Ch, LMO, Ost, OT, Physio, Pod, RN, S

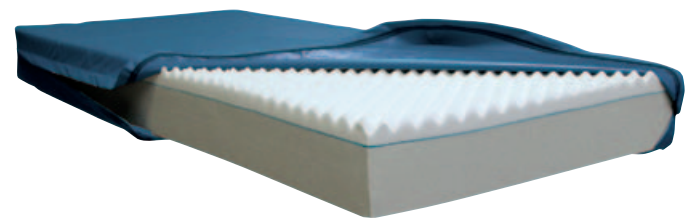


H501 Standard Foam Mattress

- Standard Hospital Grade Foam
- Two Way Stretch Water Resistant Cover
- Fire Retardant Foam and Cover
- To suit Patients with no risk
- Product available for Purchase only

Overall Width:	880mm
Overall Height:	125mm
Overall Length:	1960mm
Max User Weight:	140kg

RAP Schedule No.: AB14
 Prescriber: Ch, LMO, Ost, OT, Physio, Pod, RN, S



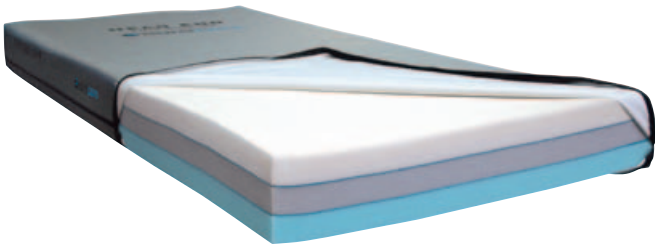
H701 Deluxe Foam Mattress

- Hospital Grade Foam Mattress with Convoluted Top
- Two Way Stretch Water Resistant Cover
- Fire Retardant Foam and Cover
- To suit Patients at low risk
- Product available for Purchase only

Overall Width:	880mm
Overall Height:	150mm
Overall Length:	1960mm
Max User Weight:	150kg

RAP Schedule No.: AB14
 Prescriber: Ch, LMO, Ost, OT, Physio, Pod, RN, S

Foam Mattress Selection Cont.



3CORE Eurocare 3Core Mattress

- Three 50mm Layers of Foam
- Top Layer Memory Foam contours to body shape for increased comfort and support
- Two Way Stretch Waterproof Cover
- Ultrasonically Welded Seams
- Fire Retardant Foam and Cover
- To suit medium risk Patients
- Product available for Purchase only

Overall Width:	880mm
Overall Height:	150mm
Overall Length:	1960mm
Max User Weight:	150kg

RAP Schedule No.: AB14
 Prescriber: Ch, LMO, Ost, OT, Physio, Pod, RN, S

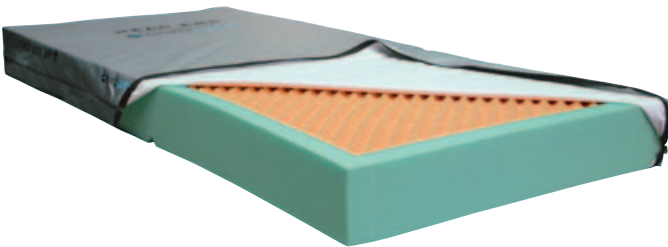


DYNAMIC Eurocare Dynamic Mattress

- Adaptive Cubic Insert System is designed to increase movement
- Side Zone Reinforcement
- Two Way Stretch Waterproof Cover
- Ultrasonically Welded Seams
- Fire Retardant Foam and Cover
- Suit medium risk Patients
- Product available for Purchase only

Overall Width:	880mm
Overall Height:	150mm
Overall Length:	1960mm
Max User Weight:	170kg

RAP Schedule No.: AB14
 Prescriber: Ch, LMO, Ost, OT, Physio, Pod, RN, S



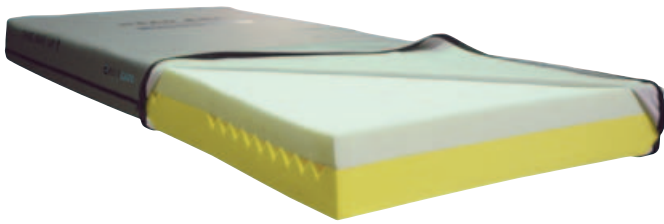
CONVOCELL Eurocare ConvoCell Mattress

- Two layers, the top consisting of a Convoluted Pressure Relieving Insert
- Side Zone Reinforcement
- Two Way Stretch Waterproof Cover
- Ultrasonically Welded Seams
- Fire Retardant Foam and Cover
- Suit medium risk Patients
- Product available for Purchase only

Overall Width:	860mm
Overall Height:	150mm
Overall Length:	1980mm
Max User Weight:	150kg

RAP Schedule No.: AB14
 Prescriber: Ch, LMO, Ost, OT, Physio, Pod, RN, S

Foam Mattress Selection Cont.

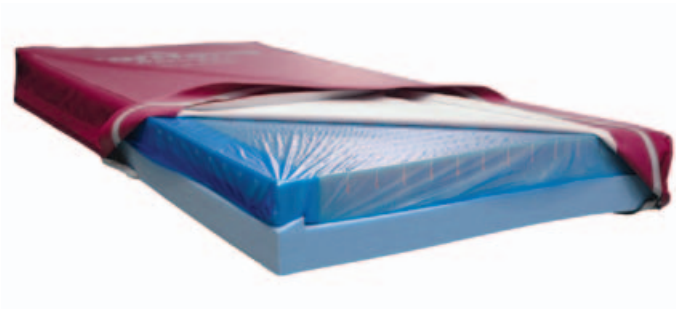


VISCOCELL Eurocare ViscoCell Mattress

- Two layers, the top is Visco-Elastic Memory Foam
- The Visco-Elastic Layer is designed to support the body's contour
- Superb Patient comfort levels
- Ultrasonically Welded Seams
- Two Way Stretch Water Resistant Cover
- Suit Patients at high risk
- Product available for Purchase only

Overall Width:	860mm
Overall Height:	150mm
Overall Length:	1980mm
Max User Weight:	150kg

RAP Schedule No.: AB14
 Prescriber: Ch, LMO, Ost, OT, Physio, Pod, RN, S



MSSPG MSS Premier Glide Mattress

- Reduces the risk of tissue damage
- Reduces friction and shear forces
- Designed to allow the top surface supporting the Patient to remain in position when profiling
- Two Way Stretch Water Resistant Cover
- Suit Patients at high to very high risk
- Product available for Purchase only

Overall Width:	880mm
Overall Height:	150mm
Overall Length:	1980mm
Max User Weight:	247kg

RAP Schedule No.: AB14
 Prescriber: Ch, LMO, Ost, OT, Physio, Pod, RN, S

Air Mattress Selection



HB100 Air Bubble Overlay

- Low risk Bubble Overlay
- Manual Pressure Control Functions
- 5 minute cycle time
- Requires a H501 5" Mattress underneath
- Suit Patients at low to medium risk of pressure sores
- Product available for Purchase only

Overall Width:	880mm
Overall Height:	50mm
Overall Length:	1980mm
Max User Weight:	100kg

RAP Schedule No.: AB14

Prescriber: Ch, LMO, Ost, OT, Physio, Pod, RN, S



HA111 Harvest Opal Overlay

- Medium risk Alternating Mattress Overlay System
- Manual Pressure Control Functions
- 5 minute cycle time
- Visual Low Pressure Indicator
- CPR Facility
- Mattress requires a thin 2" Mattress underneath
- Suit Patients with medium risk of pressure sores
- Product available for Purchase only

Overall Width:	880mm
Overall Height:	110mm
Overall Length:	1960mm
Max User Weight:	100kg

RAP Schedule No.: AB14

Prescriber: Ch, LMO, Ost, OT, Physio, Pod, RN, S



HVAM06 Harvest Consort Overlay

- High risk Alternating Overlay System
- Manual Pressure Control Functions
- 5 minute cycle time
- Visual Low Pressure Indicator
- CPR Facility
- Suit patients with high risk of pressure sores
- Product available for Hire only
- Prior approval required

Overall Width:	880mm
Overall Height:	130mm
Overall Length:	1980mm
Max User Weight:	150kg

RAP Schedule No.: AB15

Prescriber: LMO, OT, Physio, RN, S

Air Mattress Selection Cont.



HVAM01 Harvest Supreme Overlay - Hire

- High risk Alternating Air Overlay
- Single Button Controls
- 5 minute cycle time
- Visual Low Pressure Indicator
- Audible Mains Failure Alarm
- CPR Facility
- Suit Patients with high risk of pressure sores
- Product available for Hire only
- Prior approval required

Overall Width: 880mm
 Overall Height: 130mm
 Overall Length: 1980mm
 Max User Weight: 150kg

RAP Schedule No.: AB15
 Prescriber: LMO, OT, Physio, RN, S



HVAM03 Harvest Wide Supreme Overlay

- High risk Alternating Air Mattress Replacement
- Single Button Controls
- 5 minute cycle time
- Visual Low Pressure Indicator
- Audible Mains Failure Alarm
- CPR Facility
- Suit Patients with high risk of pressure sores
- Product available for Hire only
- Prior approval required

Overall Width: 1050mm
 Overall Height: 200mm
 Overall Length: 1980mm
 Max User Weight: 100kg



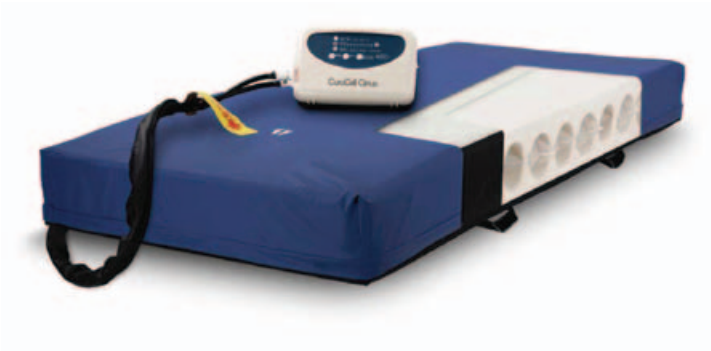
HVAM07 Harvest Cavalier Replacement Mattress System

- Very high risk Alternating Replacement System
- Single Push Button Pressure Control
- 5 minute cycle time
- Visual Low Pressure Indicator
- Static mode
- Audible Mains Failure Alarm
- CPR Facility
- Suit Patients with very high risk of pressure sores
- Product available for Hire only
- Prior approval required

Overall Width: 880mm
 Overall Height: 2000mm
 Overall Length: 1980mm
 Max User Weight: 190kg

RAP Schedule No.: AB15
 Prescriber: LMO, OT, Physio, RN, S

Air Mattress Selection Cont.



PR-2802 CuroCell® Cirrus Alternating Pain Therapy Mattress

- Very High Level Pain Relief Mattress - Up to Category 4
- Suitable for prevention and treatment of pressure damage
- Anti-shear system
- Heel slope redistributes pressure away from delicate heels
- Anti-pressure: Deep alternating cells in memory foam mattress
- Quiet pump: Almost silent and very easy to operate
- Excellent for use on profiling beds
- Product available for Hire only

Overall Width: 850mm
 Overall Length: 2000mm
 Max User Weight: 230kg

RAP Schedule No.: AB15
 Prescriber: LMO, OT, Physio, RN, S



PR-6772 CuroCell® AREA Pressure Care Mattress

- Very high Level Pressure Care Mattress that does not require a pump
- Low pressure surface
- Self adjusting
- Interconnected air chambers and pressure release valves move pressure away from body
- No pumps or maintenance required
- Heel slope
- Excellent for use on profiling beds
- Product available for Hire only

Overall Width: 900mm
 Overall Length: 2000mm
 Max User Weight: 100kg

RAP Schedule No.: AB15
 Prescriber: LMO, OT, Physio, RN, S



PR-4400 CuroCell® SAM CF10 Immersion Overlay Mattress

- High level pressure care overlay
- CPR valve next to pump, not on mattress - Saves breakages
- Anti-pressure: Deep alternating cells in memory foam mattress
- 3 Zones: Sit up in bed without 'bottoming out'
- Quiet pump: Almost silent and very easy to operate
- Excellent for use on profiling beds
- Product available for Hire only

Overall Width: 850mm
 Overall Height: 100mm
 Overall Length: 2000mm
 Max User Weight: 200kg

RAP Schedule No.: AB15
 Prescriber: LMO, OT, Physio, RN, S

Air Mattress Selection Cont.



PR-4300 CuroCell® SAM CF BAS Static Antidecubitus Mattress

- High level Replacement Mattress
- Suitable for prevention and treatment of pressure ulcers up to and including Category 2
- Static Air Mattress which provides very good comfort, pressure and pain relief
- Quiet pump: Almost silent and very easy to operate
- CPR Facility
- Product available for Hire only

Overall Width:	900mm
Overall Height:	160mm
Overall Length:	2000mm
Max User Weight:	200kg

RAP Schedule No.: AB15

Prescriber: LMO, OT, Physio, RN, S



Acute Healthcare are sub contractors to ParaQuad NSW for the MFS Contract.

Acute Healthcare

9 Artisan Road, Seven Hills NSW 2147
PO Box 340, Ermington NSW 1700

Acute Healthcare MFS Support
T 1300 022 883
F 1300 122 883

E sales@acutehealthcare.com.au

www.acutehealthcare.com.au